



## Dual-Locking, Heavy-Duty Power & Signal Connectors

Available in 38 position (6 x Power/32 x Signal Configuration)

Amphenol Sine Systems' **DuraLok™ Dual-Locking Connectors** are high-density, heavy-duty, environmentally-sealed connectors available in both Plugs and Receptacles. The robust, integrated locking lever, built directly into the Plug housing, ensures a secure mating with the Receptacle every time.

All Plugs and Receptacles are IP67/69K rated (mated).



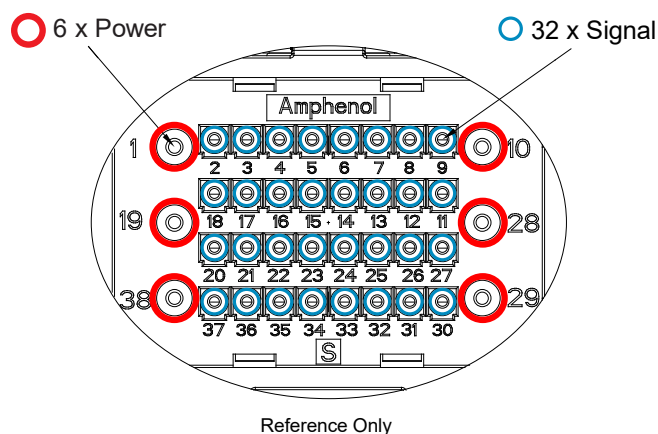
### Key Features

- Integrated Locking Lever
- Combined Power & Signal In One
- A, B & C Keying Options

**Applications:** Heavy Equipment, Agriculture, Construction, Transportation, Off-Road, Mining, Industrial, Railway, Automotive, Diagnostics, Marine, Water Resistance, Harsh Environments

### Technical Specifications

Temperature Range	-40°C to +125°C
Max. Current (AMP)	13A (Power), 5A (Signal)
Voltage Rating (AC/DC)	250V
IP Rating	IP67/69K (mated)
Min. Mating Cycles	> 500
Dielectric Value	Less than 2 mA current leakage @2000V AC
Insulation Resistance	500 megohms minimum
Contact Type	Stamped & Formed
Contact Material	Copper Alloy
Contact Plating	Tin (Standard); Gold or Nickel Plating (Optional)
Body Material (Shell, Locking Lever, End Cap)	Thermoplastic UL94 V-0
Wire Seal/Gasket	Silicone Rubber
RoHS	Compliant

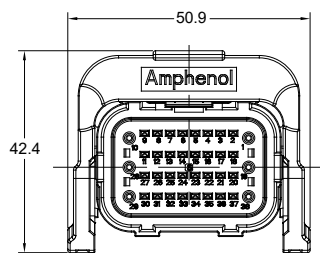


A ASeries™ Family

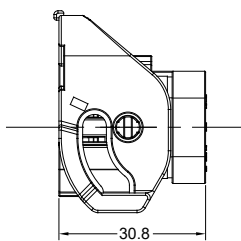


Standard products. Custom solutions

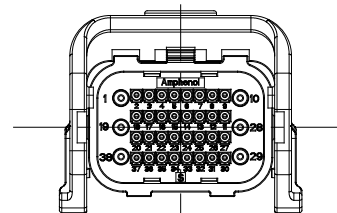
DuraLok™ Plug Dimensions (in mm) & Keying Options (A, B and C)



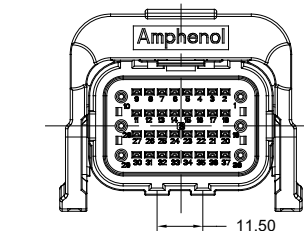
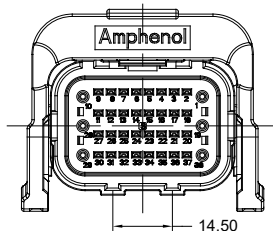
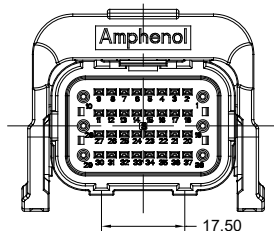
Plug - Key A (ATV06-38SA-Sx)



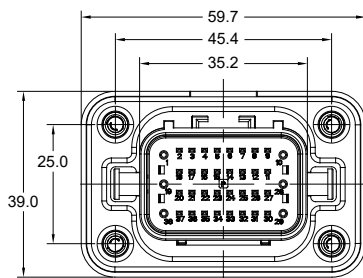
Plug - Key B (ATV06-38SB-Sx)



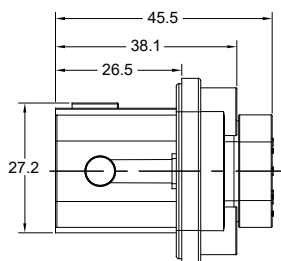
Plug - Key C (ATV06-38SC-Sx)



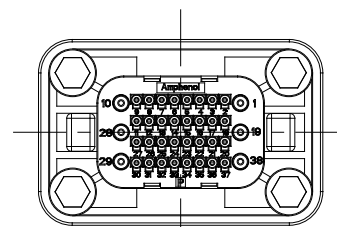
DuraLok™ Receptacle Dimensions (in mm) & Keying Options (A, B and C)



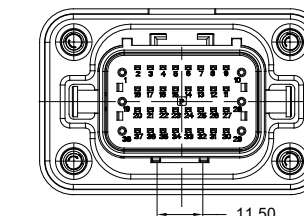
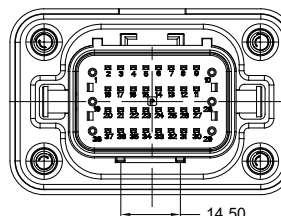
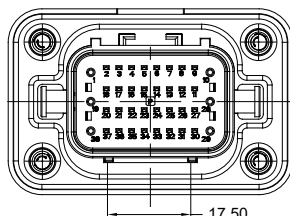
Receptacle - Key A (ATV04-38PA-Sx)



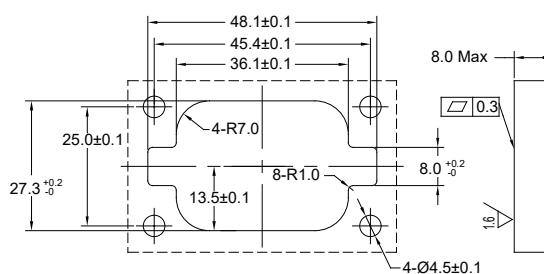
Receptacle - Key B (ATV04-38PB-Sx)



Receptacle - Key C (ATV04-38PC-Sx)



DuraLok™ Receptacle Panel Cutout Dimensions (in mm)



Receptacle - Panel Cutout

Image	Part Number	Description	Wire Range	Amp	Volt
	ATV06-38SA-S2	38 Position, Plug, Socket, DuraLok™, Power and Signal, Standard Seal, Keyed A, Grey	20AWG (Ø1.5-1.8mm) Signal 14-22AWG (Ø1.6-2.8mm) Power	13A	250V
	ATV04-38PA-S2	38 Position, Receptacle, Pin, DuraLok™, Power and Signal, Standard Seal, Keyed A, Grey	20AWG (Ø1.5-1.8mm) Signal 14-22AWG (Ø1.6-2.8mm) Power	13A	250V
	ATV06-38SB-S2	38 Position, Plug, Socket, DuraLok™, Power and Signal, Standard Seal, Keyed B, Grey	20AWG (Ø1.5-1.8mm) Signal 14-22AWG (Ø1.6-2.8mm) Power	13A	250V
	ATV04-38PB-S2	38 Position, Receptacle, Pin, DuraLok™, Power and Signal, Standard Seal, Keyed B, Grey	20AWG (Ø1.5-1.8mm) Signal 14-22AWG (Ø1.6-2.8mm) Power	13A	250V
	ATV06-38SC-S2	38 Position, Plug, Socket, DuraLok™, Power and Signal, Standard Seal, Keyed C, Grey	20AWG (Ø1.5-1.8mm) Signal 14-22AWG (Ø1.6-2.8mm) Power	13A	250V
	ATV04-38PC-S2	38 Position, Receptacle, Pin, DuraLok™, Power and Signal, Standard Seal, Keyed C, Grey	20AWG (Ø1.5-1.8mm) Signal 14-22AWG (Ø1.6-2.8mm) Power	13A	250V
	PL000761	Dust Cap for Recep, DuraLok™, White	-	-	-
	PL000762	Dust Cap for Plug, DuraLok™, White	-	-	-

Image	Part Number	Description	Wire Range	Amp
	SC000571T	Pin Contact, Stamped & Formed, Signal, Size 1.0x0.64mm, Tin Plating *Commonly Stocked Contacts	20-22AWG (0.34-0.50mm <sup>2</sup> )	5A
	SC000572T	Socket Contact, Stamped & Formed, Signal, Size 1.0x0.64mm, Tin Plating *Commonly Stocked Contacts	20-22AWG (0.34-0.50mm <sup>2</sup> )	5A
	SC000571F	Pin Contact, Stamped & Formed, Signal, Size 1.0x0.64mm, Gold Flash	20-22AWG (0.34-0.50mm <sup>2</sup> )	5A
	SC000572F	Socket Contact, Stamped & Formed, Signal, Size 1.0x0.64mm, Gold Flash	20-22AWG (0.34-0.50mm <sup>2</sup> )	5A
	SC000571 <b>Gx</b>	Pin Contact, Stamped & Formed, Signal, Size 1.0x0.64mm, Gold Plating <b>G5</b> = 5μ" Gold Plating; <b>G10</b> = 10μ" Gold Plating <b>G15</b> = 15μ" Gold Plating; <b>G30</b> = 30μ" Gold Plating	20-22AWG (0.34-0.50mm <sup>2</sup> )	5A
	SC000572 <b>Gx</b>	Socket Contact, Stamped & Formed, Signal, Size 1.0x0.64mm, Gold Plating <b>G5</b> = 5μ" Gold Plating; <b>G10</b> = 10μ" Gold Plating <b>G15</b> = 15μ" Gold Plating; <b>G30</b> = 30μ" Gold Plating	20-22AWG (0.34-0.50mm <sup>2</sup> )	5A
	SC000571N	Pin Contact, Stamped & Formed, Signal, Size 1.0x0.64mm, Nickel Plating	20-22AWG (0.34-0.50mm <sup>2</sup> )	5A
	SC000572N	Socket Contact, Stamped & Formed, Signal, Size 1.0x0.64mm, Nickel Plating	20-22AWG (0.34-0.50mm <sup>2</sup> )	5A
	SP14M2F	Pin Contact, Stamped & Formed, Size 16, 3 Tangs, Gold Flash over Nickel *Commonly Stocked Contacts	14-16AWG (2.0-2.5mm <sup>2</sup> )	13A
	SS14M2F	Socket Contact, Stamped & Formed, Size 16, 3 Tangs, Gold Flash over Nickel *Commonly Stocked Contacts	14-16AWG (2.0-2.5mm <sup>2</sup> )	13A
	SP14M2 <b>Gx</b>	Pin Contact, Stamped & Formed, Size 16, 3 Tangs, Gold over Nickel <b>G5</b> = 5μ" Gold over Nickel; <b>G10</b> = 10μ" Gold over Nickel <b>G15</b> = 15μ" Gold over Nickel; <b>G30</b> = 30μ" Gold over Nickel	14-16AWG (2.0-2.5mm <sup>2</sup> )	13A

Image	Part Number	Description	Wire Range	Amp
	SS14M2Gx	Socket Contact, Stamped & Formed, Size 16, 3 Tangs, Gold over Nickel <b>G5</b> = 5μ" Gold over Nickel; <b>G10</b> = 10μ" Gold over Nickel <b>G15</b> = 15μ" Gold over Nickel; <b>G30</b> = 30μ" Gold over Nickel	14-16AWG (2.0-2.5mm <sup>2</sup> )	13A
	SP14M2T	Pin Contact, Stamped & Formed, Size 16, 3 Tangs, Tin over Nickel	14-16AWG (2.0-2.5mm <sup>2</sup> )	13A
	SS14M2T	Socket Contact, Stamped & Formed, Size 16, 3 Tangs, Tin over Nickel	14-16AWG (2.0-2.5mm <sup>2</sup> )	13A
	SP16M2F	Pin Contact, Stamped & Formed, Size 16, 3 Tangs, Gold Flash over Nickel *Commonly Stocked Contacts	16-18AWG (0.75-1.5mm <sup>2</sup> )	13A
	SS16M2F	Socket Contact, Stamped & Formed, Size 16, 3 Tangs, Gold Flash over Nickel *Commonly Stocked Contacts	16-18AWG (0.75-1.5mm <sup>2</sup> )	13A
	SP16M2Gx	Pin Contact, Stamped & Formed, Size 16, 3 Tangs, Gold over Nickel <b>G5</b> = 5μ" Gold over Nickel; <b>G10</b> = 10μ" Gold over Nickel <b>G15</b> = 15μ" Gold over Nickel; <b>G30</b> = 30μ" Gold over Nickel	16-18AWG (0.75-1.5mm <sup>2</sup> )	13A
	SS16M2Gx	Socket Contact, Stamped & Formed, Size 16, 3 Tangs, Gold over Nickel <b>G5</b> = 5μ" Gold over Nickel; <b>G10</b> = 10μ" Gold over Nickel <b>G15</b> = 15μ" Gold over Nickel; <b>G30</b> = 30μ" Gold over Nickel	16-18AWG (0.75-1.5mm <sup>2</sup> )	13A
	SP16M2T	Pin Contact, Stamped & Formed, Size 16, 3 Tangs, Tin over Nickel	16-18AWG (0.75-1.5mm <sup>2</sup> )	13A
	SS16M2T	Socket Contact, Stamped & Formed, Size 16, 3 Tangs, Tin over Nickel	16-18AWG (0.75-1.5mm <sup>2</sup> )	13A
	SP20M2F	Pin Contact, Stamped & Formed, Size 16, 3 Tangs, Gold Flash over Nickel *Commonly Stocked Contacts	20-22AWG (0.34-0.50mm <sup>2</sup> )	13A



Image	Part Number	Description	Wire Range	Amp
	SS20M2F	Socket Contact, Stamped & Formed, Size 16, 3 Tangs, Gold Flash over Nickel *Commonly Stocked Contacts	20-22AWG (0.34-0.50mm <sup>2</sup> )	13A
	SP20M2Gx	Pin Contact, Stamped & Formed, Size 16, 3 Tangs, Gold over Nickel <b>G5</b> = 5μ" Gold over Nickel; <b>G10</b> = 10μ" Gold over Nickel <b>G15</b> = 15μ" Gold over Nickel; <b>G30</b> = 30μ" Gold over Nickel	20-22AWG (0.34-0.50mm <sup>2</sup> )	13A
	SS20M2Gx	Socket Contact, Stamped & Formed, Size 16, 3 Tangs, Gold over Nickel <b>G5</b> = 5μ" Gold over Nickel; <b>G10</b> = 10μ" Gold over Nickel <b>G15</b> = 15μ" Gold over Nickel; <b>G30</b> = 30μ" Gold over Nickel	20-22AWG (0.34-0.50mm <sup>2</sup> )	13A
	SP20M2T	Pin Contact, Stamped & Formed, Size 16, 3 Tangs, Tin Plating over Nickel	20-22AWG (0.34-0.50mm <sup>2</sup> )	13A
	SS20M2T	Socket Contact, Stamped & Formed, Size 16, 3 Tangs, Tin Plating over Nickel	20-22AWG (0.34-0.50mm <sup>2</sup> )	13A